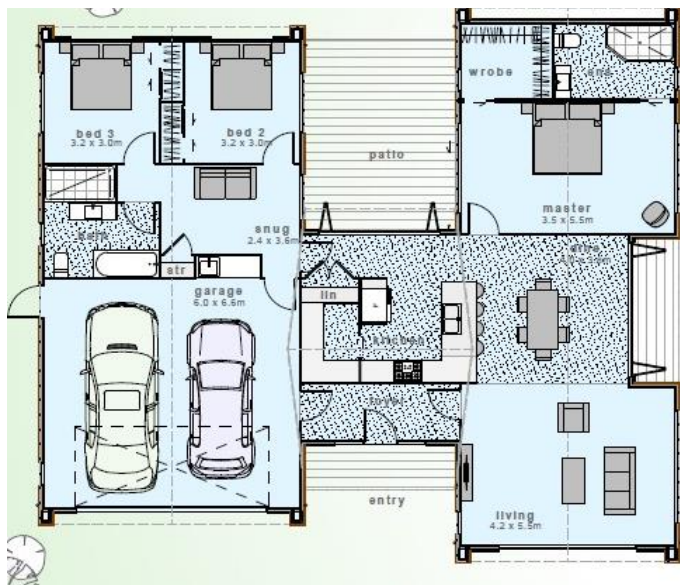


SECURE YOUR KINLOCH RETREAT

68 MONTGOMERY CRESCENT, KINLOCH



Total Floor Area: 187m² Land Area: 1114m² (mol)

- ✓ Kitchen with walk in pantry
- ✓ Open plan living & dining with separate snug
- ✓ 3 Bedroom, 2 bathroom with walk-in tiled showers
- ✓ Polished Concrete Floors
- ✓ Double Garage
- ✓ Includes Driveway & Landscaping allowance

** Section negotiation through Kim Fraser from Sotheby's and build package through Future Homes NZ*

A rare opportunity awaits in the established and popular Holyoake's sub-division in picturesque Kinloch! Step inside and relax as you embrace semi-rural lakeside living in lovely Kinloch, just out of Taupo. This stylish single level design from Future Homes NZ is clad in Stria and Linea weatherboards with gable features and large picture windows, to soak in the sun from the Northern aspect of the site. The open plan living, dining and kitchen areas are further extended with fabulous indoor / outdoor flow onto patio areas to take in the outdoors. With 3-bedrooms and a separate snug, this layout offers fabulous functionality and efficient use of space.

Within close walking distance to bush walks and the lakefront, this location enjoys natural beauty all year round. Walking and biking tracks, Kinloch marina, boating, fishing & swimming all on your doorstep, along with golf, tennis, or simply relaxing at home. Just a 20-minute drive into Taupo township, and National Park at the Southern end of the lake for the "snow" enthusiasts.

HOUSE & LAND PACKAGE
STARTING FROM: \$815,450*

SECURE YOUR OPPORTUNITY

Steve Elliott 021 784 546

Angeleine McGahey 021 330 499

E: sales@futurehomes.nz



FUTURE
HOMES

SALES OFFICE

28 Spa Road, Taupo

Office: 07 376 7040

WWW.FUTUREHOMES.NZ

Making your dream home a reality