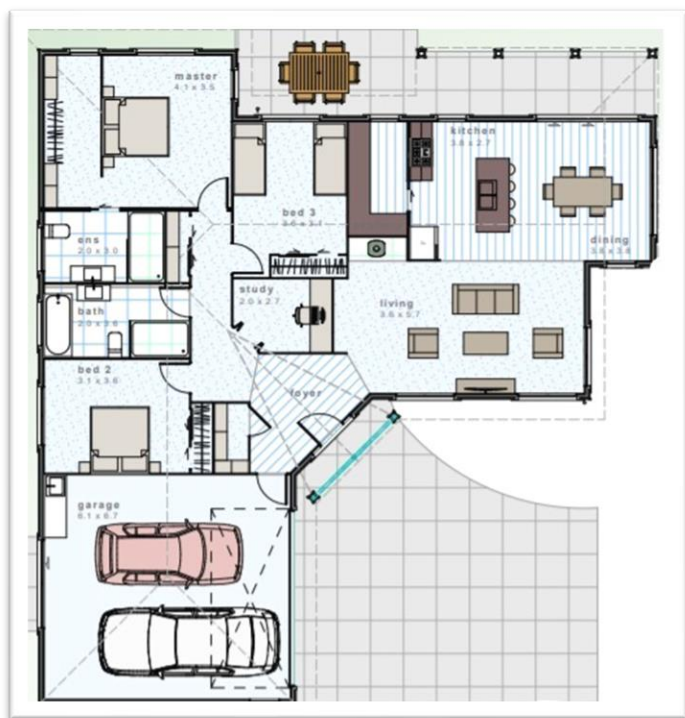


“LOCH” IN YOUR DREAMS BY THE LAKE?

9 KANUKA GROVE, KINLOCH



Total Floor Area: 189.46m² Land Area: 2623m² (mol)

- ✓ Kitchen, Walk in Pantry, Open Plan Living & Dining
- ✓ 3 Bedroom, 2 Bathroom, + Study
- ✓ Double Garage

Tucked away at the end of a cul-de-sac, opportunity awaits in the Oakdale sub-division of Kinloch!

The “Loch” design from Future Homes NZ, classically clad in Linea weatherboard with gable features, offering great street appeal. Step inside through the entry foyer to enjoy generous open plan living, dining and kitchen, complete with a large walk in pantry. With 3-bedrooms and a study, this layout offers fabulous functionality and efficient use of space.

Flanked by bush reserves on either side of the sub-division, the location is surrounded by natural beauty all year round. Walking and biking tracks, Kinloch marina, boating, fishing & swimming all on your doorstep, along with golf, tennis, or simply relaxing at home and taking in the view. Just a 20-minute drive into Taupo township, and National Park at the Southern end of the lake for the “snow” enthusiasts.

HOUSE & LAND PACKAGE*
STARTING FROM: \$788,750

** Negotiation and purchase of the section will be direct with the owner and the build package through Future Homes NZ*

SECURE YOUR OPPORTUNITY

Steve Elliott 021 784 546

Angeleine McGahey 021 330 499

E: sales@futurehomes.nz



**FUTURE
HOMES**

Making your dream home a reality

SALES OFFICE

28 Spa Road, Taupo

Office: 07 376 7040

WWW.FUTUREHOMES.NZ